



Heathside, Weybridge, KT13 9YL





A fantastic opportunity to acquire a ground-floor apartment in the highly sought-after Heathside development, just a short walk from Weybridge mainline station, Queens Road shops, Weybridge cricket green, and the High Street.

Designed to maximize space and natural light, this well-proportioned home features a generous dual-aspect reception room with views over the beautifully maintained communal gardens. The kitchen also enjoys pleasant garden views, while both spacious double bedrooms include built-in wardrobes. The shower room is fitted with a classic white suite, large walk-in shower, wash basin, and part tiled walls.

Ideal for downsizers, first-time buyers, and buy to let investors, this apartment is offered with no onward chain and includes a garage in a nearby block. With its prime location and excellent amenities close by, this is a fantastic opportunity to secure a home in one of Weybridge's most desirable settings.

Leasehold - Share of Freehold



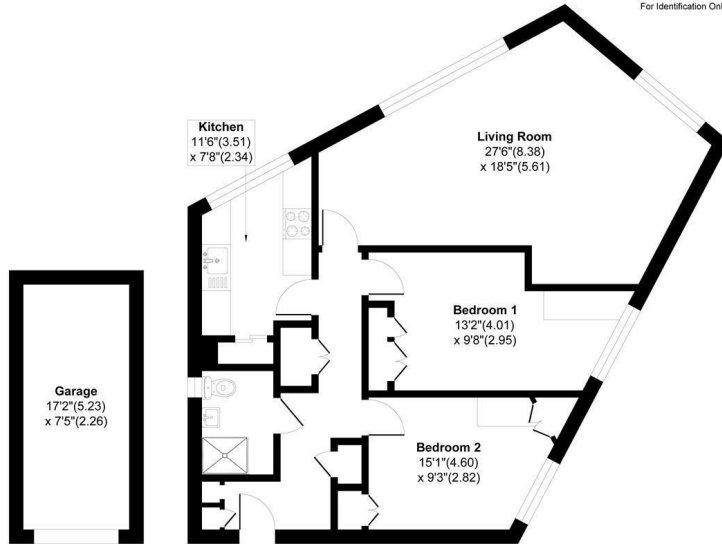
Heathside, Weybridge KT13

Approximate Area = 863 sq ft / 80.1 sq m

Garage Area = 127 sq ft / 11.8 sq m

Total Area = 990 sq ft / 91.9 sq m

For Identification Only - Not to scale



Garage

Ground Floor

Floor plan Produced in accordance with RICS Property Measurement 2nd Edition, Incorporating International Property Measurement Standards (IPMS2 Residential). Produced for Grants Homes Agents.



EPC Rating: null





Grants Homes 60 Church Street, Weybridge, Surrey, KT13 8DL
T: 01932 841020 E: weybridge@grantshomes.co.uk

